

Figure 1: Storm Damage and White Pine Health at Song Memorial Forest



pic of
needle
disease



In October 2019, a powerful windstorm impacted the Orange-Warwick region, including Song Memorial Forest. Many trees were tipped, tipped over or snapped, including many nice red oaks (a) & (b). White pines and other trees were affected as well (c). For some years, the health of white pines throughout the region has been compromised by a number of fungal pathogens, causing thin crowns. This is especially stressful for white pines already struggling with overcrowding (d).

If a tree blows over or is dying in your yard, you might wish to have it removed. The forest is different. Forest management doesn't have to mean "cleaning up" messes or cutting diseased trees, but storm damage and disease are important factors to take into consideration.

Figure 2: Recent Forest Management at Song Memorial Forest



Recent forest management at Song consisted of three approaches: creation of openings to establish young trees on about 7.5 acres (a); thinning to improve the growth of existing trees and to promote a layered canopy on about 39.2 acres (b); and about 36.9 acres where no cutting occurred.

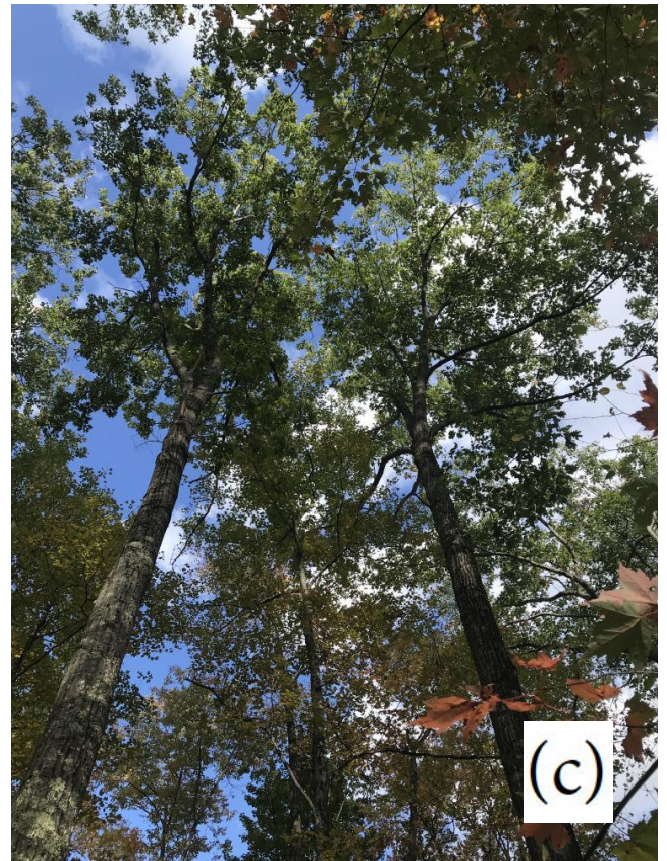


Figure 3: Forestry Methods at Song Memorial Forest



Forestry methods used at Song included using blue paint to mark trees to be cut such as this red oak that is being thinned out to benefit the oak behind it (a); using pink flagging to identify trees needing special protection during the logging process such as this white oak (b); and striking a balance between the salvage of downed timber and retention of complex structure including upturned root balls and blown-down trees (c).