

ANNUAL REPORT

2020



Emma George Ellsworth has been named Executive Director, effective October 1, 2020, following a year of working as Deputy Director. After an incredibly successful 26-year tenure, Leigh Youngblood decided the time was right for the next generation of leadership. Leigh will stay on for one year in an advisory capacity to ensure a smooth transition.

During her time here, Leigh expanded on the established effectiveness of Mount Grace. We grew from a small 1-person organization into one of the strongest and most dynamic land trusts in Massachusetts, with 35,000 acres conserved in less than 35 years. In the midst of these changes and during a year marred by the pandemic, Mount Grace adapted, completing projects that conserved over 900 acres in our region.

Today we have increasing threats to our protected lands and unprotected open spaces in the form of climate change and a new expected wave of development. Mount Grace will continue to utilize the tools of collaboration and innovation and the strength of our community to address these coming challenges. We have much work left to do, let us do it together!

Warmly,



Max Feldman
President



Emma Ellsworth
Executive Director

Conservation Report

September 2019 - August 2020

Hillis, Winchendon and Rindge, NH, 167.5 acres

Danny Hillis and Taylor Milsal donated conservation restrictions (CRs) to Mount Grace on their abutting properties in MA and NH. Their conservation efforts ensured the permanent protection of the entire shoreline of the 43-acre Robbins Pond and the surrounding woodlands, which are intended to be kept as “Forever Wild.”

Earleacres, Warwick, 49 acres

Board member Larry Fitzmaurice donated his family’s 49 acres to Mount Grace, filling a significant gap in Mount Grace’s surrounding Arthur Iversen Conservation Area along Gale Road. Earleacres represents a critical addition to this flagship property.

Sunset View Farm, Winchendon, 69.62 acres

Last year, Chuck and Livvy Tarleton donated a CR to Mount Grace on their farm. This year, we successfully completed phase II of the project by placing an Option to Purchase at Agricultural Value (OPAV) on the farm. This tool will ensure that the farm, house, and farm stand stay together and in the hands of farmers, forever, and is intended to make the whole farm more affordable for the next generation of farmers.

Perkins Woodlands, Royalston, 88 acres

Dick Perkins donated a CR on 88 acres of his land to Mount Grace, and then donated the land itself to the New England Forestry Foundation (NEFF). The land is now enrolled in NEFF’s Pooled Timber Income Fund, and the timber will be managed according to NEFF’s Exemplary Forestry standards.

Burdin (Norcross Hill Conservation Project), Templeton, 17 acres

Jo-Anne and Danny Burdin worked with Mount Grace and North County Land Trust to place a CR on 17 acres of their property abutting the Otter River State Forest. This CR is Mount Grace’s first in Templeton! Jo-Anne was instrumental in the early outreach phases of creating the Norcross Hill Conservation Project.

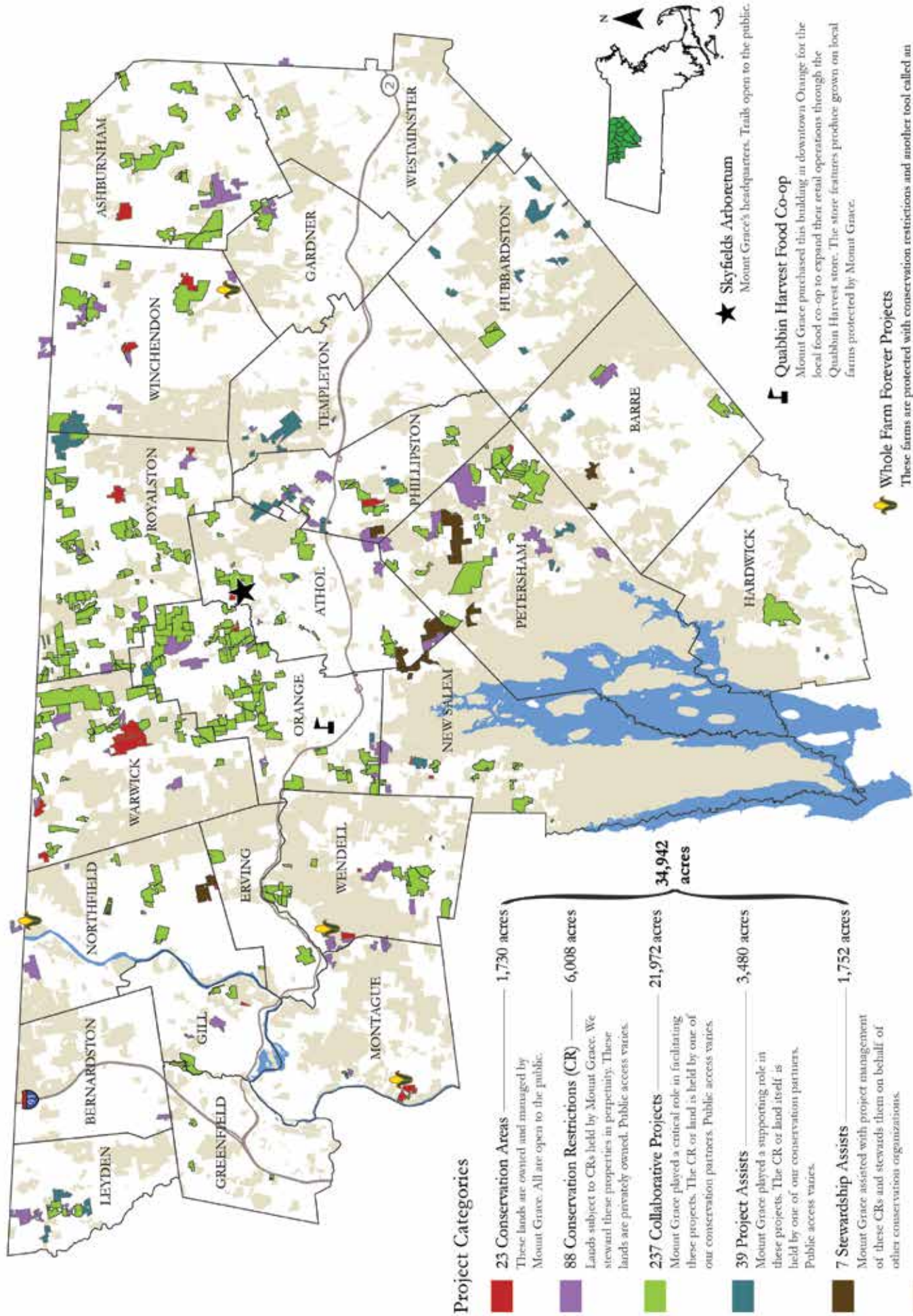
Norcross Hill Conservation Project, Templeton, multiple properties

Last year, our partner MassWildlife purchased the 465-acre Fernald Corporation Property through a MA Landscape Partnership Program grant. This year, all the remaining projects funded by this grant were completed, including the Burdin project. The MA Department of Conservation and Recreation also acquired two properties from the Town of Templeton to add to abutting State Forest land. In total, 506.58 acres in Templeton were protected through this collaborative project.

Poplar Mountain, Erving, 50 acres

In 2015, the Mackin family donated this land to Mount Grace. At the time, Kinder Morgan proposed installing a natural gas pipeline across Massachusetts, including through this property. As the landowner, Mount Grace had direct legal standing to challenge this proposal. When Kinder Morgan eventually withdrew its proposal, Mount Grace worked with the Town of Erving to complete the vision for this property. This spring, the Town of Erving assumed ownership and added this property to its abutting Town Forest.

Mount Grace Land Conservation Trust Conservation Projects 1986 to 2020



Project Categories

- **23 Conservation Areas** — 1,730 acres
These lands are owned and managed by Mount Grace. All are open to the public.
 - **88 Conservation Restrictions (CR)** — 6,008 acres
Lands subject to CRs held by Mount Grace. We steward these properties in perpetuity. These lands are privately owned. Public access varies.
 - **237 Collaborative Projects** — 21,972 acres
Mount Grace played a critical role in facilitating these projects. The CR or land is held by one of our conservation partners. Public access varies.
 - **39 Project Assists** — 3,480 acres
Mount Grace played a supporting role in these projects. The CR or land itself is held by one of our conservation partners. Public access varies.
 - **7 Stewardship Assists** — 1,752 acres
Mount Grace assisted with project management of these CRs and stewards them on behalf of other conservation organizations.
 - **Other Protected Land**
- 34,942 acres**

★ **Skyfields Arboretum**
Mount Grace's headquarters. Trails open to the public.

⚡ **Quabbin Harvest Food Co-op**
Mount Grace purchased this building in downtown Orange for the local food co-op to expand their retail operations through the Quabbin Harvest store. The store features produce grown on local farms protected by Mount Grace.

👉 **Whole Farm Forever Projects**
These farms are protected with conservation restrictions and another tool called an "Option to Purchase at Agricultural Value" (OPAV). These tools ensure that the farm and its infrastructure stay together in the hands of farmers and are designed to make the whole farm more affordable for the next generation of farmers, forever.

For more information on our public lands visit us at mountgrace.org/visit/map



The Norcross Hill Wildlife Management Area in Templeton. PHOTO CREDIT: Norm Eggert Photography

Mount Grace's **Landscape Conservation Program** is the guardian of a rich mosaic of natural lands. We act quickly and strategically to safeguard our rural heritage and bolster our region's legacy of land conservation. Working with partners, we save the landscapes that our natural and human communities need to thrive. Together, we stitch these ecologically significant and locally important places into one connected and resilient landscape.

The **North Quabbin Regional Landscape Partnership**—an informal network of landowners, land trusts, planning agencies, academic institutions, and public agencies—is our primary mechanism for implementing this vision, as collaboration is the most powerful tool for achieving our mission.

This spring marked the completion of our 506-acre Norcross Hill Conservation Project in Templeton. An \$811K Massachusetts Landscape Partnership Program grant enabled us to collaborate with Jo-Anne and Danny Burdin, the Walter E. Fernald Corporation, LandVest, North County Land Trust, MassWildlife, the Town of Templeton, and the MA Department of Conservation and Recreation to permanently protect four properties that enhance a corridor of protected and publicly-accessible lands.

This year also marked our 11th year of partnering with UMass-Amherst to develop and deliver conservation-based estate planning outreach programming across the Commonwealth. COVID-19 dismantled our spring outreach calendar and forced us to find fast and creative solutions. Our TerraCorps-AmeriCorps member, Valerie Cedrone, displayed grace, grit, and resilience as she transitioned an in-person statewide conference into a series of webinars mere weeks before the scheduled event. The reconfigured conference attracted more than 330 unique participants—triple the annual attendance we've seen at past Open Space Conferences. The success of the conference and dozens of additional re-imagined outreach activities are a testament to the dedication of our conservation partners who helped implement our Massachusetts Working Forest Initiative funding this year: North County Land Trust, East Quabbin Land Trust, Bolton Conservation Commission, Sudbury Valley Trustees, Hilltown Land Trust, Kestrel Land Trust, Berkshire Natural Resources Council, and attorney Janet Morrison. Collectively, we reached more than 3,000 landowners and engaged with more than 120 communities and conservation organizations this year.

– Sarah Wells

The **Community Conservation Program** partners with community members, organizations, and municipalities to prioritize and conserve lands that benefit the health and well-being of our region's people and their natural environment. We work to empower communities to enjoy and steward their natural resources and strengthen their connections to the natural world.

We are excited to have kicked off the conservation of over 300 acres of land this past year. Thanks to a generous donation by Larry Fitzmaurice, we added 49 acres of beautiful forest and wetlands to our Arthur Iversen Conservation Area in Warwick. The property, dubbed 'Earleacres' by Larry's family, lies along Gale Road and provides beautiful views of the nearby Rum Brook wetlands. Three recent projects, 120 acres in total, utilized the Massachusetts Land Conservation Tax Credit Program, which provides our generous landowners with state tax credits for their donations.

This year has seen an increase in towns participating in the state's Municipal Vulnerability Preparedness (MVP) grant program. These towns will have access to MVP Action Grants to fund projects that create environmental, social, and economic resilience to the effects of climate change. We recently participated in the core planning teams for Gardner and Athol and are excited to support future Action Grants focused on nature-based solutions to the challenges of climate change.

We continue to cultivate partnerships within our communities to collaboratively protect land in the region. If you have a passion for a community-based conservation project in your area, please reach out and tell us about it!

– Fletcher Harrington

Our **Farm Conservation Program**

undertakes innovative projects that help sustain our local economy, increase community access to healthy, local food, and build Massachusetts' food self-reliance by protecting farms for future generations. We work to develop and employ new conservation models to ensure that whole farms remain affordable and will transfer to the next generation of farmers.



Sunset View Farm, located on Route 140 in Winchendon, is Mount Grace's fourth "whole farm forever" project! Pictured is Cami Duquet and Dr. Harrington at the bake sale fundraiser for Sunset View Farm.

This year we successfully completed phase 2 of the permanent conservation of the 70-acre Sunset View Farm in Winchendon, fundraising the money to further protect the farmhouse, land, and buildings as a "whole farm" that will always pass to future farmers. To do this, we placed an Option to Purchase at Agricultural Value (OPAV) on the entire property. When the farm leaves the family, it must be sold to a farmer for its agricultural value, which will help make the farm more affordable for the next

generation of farmers. Landowners Chuck and Livvy Tarleton have been farming the land and running their beloved farm stand



for 40 years, continuing the 230-year legacy of active farming on this land. Hundreds of community members and farm stand customers contributed to our campaign to save Sunset View Farm as a whole farm forever, and we are deeply grateful to Chuck and Livvy for their optimism and dedication.

The program continued coordinating the Greater Quabbin Food Alliance – a regional food systems network founded by Mount Grace in 2013 – by organizing two regional gatherings and smaller working group meetings throughout the year. The meetings brought together stakeholders from across the region to connect and collaborate on ongoing food access and economic development initiatives. Mount Grace also celebrated our 6th year partnering with Quabbin Harvest in Orange, which increases access to healthy local food for area residents and supports local farmers across the region.

– Rocio Lalanda

The **Stewardship Program** partners with experts, natural resource professionals, community members, committed volunteers, and other organizations to demonstrate responsible long-term environmental, economic, social, and community rewards. We encourage outdoor recreation, build relationships with our landowners, and engage future generations to steward and get out on the land.

Despite our volunteer workdays being cancelled or drastically downsized due to COVID-19, our Stewardship Program had a productive year. We monitored more than 90 conservation restrictions and 23 conservation areas, and we formed a robust, new Stewardship Committee. The newly formed committee—consisting of long time members and volunteers Julia Blyth, Martin Bowers, Gary Brigham, Len Crossman, Mimi Hellen Jones, Ray Jackson, Jean McCurdy, Steve Rawson, and Jerry Wagener – was instrumental in knocking out much-needed stewardship projects to improve accessibility of our Mount Grace-owned conservation areas. Such projects included digging holes to install new entrance and directional signs at trailheads at Paul Dunn Woodland Preserve, Arthur Iversen Conservation Area, and Fern Glenn Conservation Area; improving the parking area at Alderbrook Meadows Wildlife Sanctuary; marking property boundaries on 5 conservation areas; re-routing trails; and many other projects. Their cheer and enthusiasm for getting things done even in the midst of a pandemic (and a tremendous increase in trail usage) has been awe-inspiring.



Stewardship Committee members (from left to right): Julia Blyth, Gary Brigham, Ray Jackson, and TerraCorps member Corey Wrinn, discussing a possible re-route at Fox Valley Wildlife Sanctuary in Phillipston

Since the COVID-19 outbreak began, we have seen an increase in the usage of our trails and a greater appreciation for the outdoors. Public trails have been maintained by not only the Stewardship Committee, but also through the generous help of community volunteers who have visited and helped maintain our trails for others to enjoy. Mount Grace is able to thrive thanks to our wonderful community members!

– KimLynn Nguyen

The **Community Engagement Program** strives to connect the people of our region and beyond with our work and with the land. Through events, media, and youth education programs, we engage multiple groups in learning about, caring for, and protecting the land. We offer various programs to ensure access to a broad spectrum of community members.

This year, we successfully launched a new website that is more user friendly and interactive. Our interactive map allows you to find lands that Mount Grace has helped conserve and information on how you can enjoy them.

As a response to the COVID-19 pandemic, Mount Grace offered some creative programming to our members and the general public. In collaboration with expert naturalists like Dan Jaffe Wilder and David Small, Mount Grace hosted a webinar series of Citizen Science Nature Identification Workshops to encourage our members and neighbors to pitch in and help with a natural resource inventory on Mount Grace properties.



A snapshot from the Pollinators: A Journey of the Senses video that our TerraCorps member, Corey Wrinn, created for our partner schools.

Overall, over 750 participants attended the seven educational identification webinars and learned about butterflies, edible plants, leaf miners, and more! In total, the webinar events reached over 84,000 people on Facebook.

Our ongoing partnerships with three local school districts (Athol/Royalston, Orange, and Northfield) continued in the form of pre-recorded video lessons that our TerraCorps members created.

– Marielena Lima

Ways of Giving to Mount Grace

– David Kotker

Thanks to all of our supporters for partnering with Mount Grace to protect our farms, forests, water, and wildlife. Without your support, the conservation of our community resources would not be possible! Some creative ways that you can support our conservation and stewardship work include:

- **Monthly Giving** – Set up a monthly gift in any amount on your credit or debit card.
- **Real Estate Gifts for Resale** – Contact our staff about donating any type of real estate property located anywhere, especially non-conservation properties, to Mount Grace for resale to benefit conservation.
- **Website Donations** – Visit mountgrace.org anytime you like to make a gift to support our work.
- **Workplace Giving** – If your employer offers matching gifts, simply include your company's matching gift form with your contribution. If your employer is a partner in Earthshare, a federation of environmental charities, you may designate an automatic deduction from each paycheck to Mount Grace.
- **IRA Charitable Rollovers** – If you are 72 or older you can use the IRA charitable rollover to donate up to \$100,000 annually to Mount Grace to offset IRA minimum distribution requirements and avoid paying income taxes on the gifted income.
- **Planned Gifts** – Please contact us if you are interested in learning about estate planning efforts that can benefit both your family and conservation. If you have put us in your will at any level, we truly appreciate it. Please let us know so we may thank you in your lifetime!

We welcome your participation in the Mount Grace Margaret Power Biggs Society.



The Margaret Power Biggs Society recognizes individuals, businesses, organizations, and foundations contributing at least \$1,000 annually to Mount Grace Land Conservation Trust.

To learn more about how you can become part of the Margaret Power Biggs Society, contact Major Gifts and Grants Manager David Kotker at 978-541-1767 or kotker@mountgrace.org.

A Legacy for the Land

“The forests and farms I see every day make me thankful I live here, and Mount Grace has inspired me with its commitment to protect that land forever. My legacy will ensure that Mount Grace will always stand ready to protect and watch over the places that matter to me.” – Steve Rawson, Founding Member, Mount Grace Legacy Society

Now, more than ever, Mount Grace needs community support to protect cherished local landscapes. We invite you to join with the founding members of Mount Grace's Legacy Society to consider planned giving as a way to support the land with Mount Grace.

Planned gifts have had an enormous impact on the history of Mount Grace. Our 9,000-acre Tully Initiative began thanks to a bequest from Eleanor Whitmore, who asked that her modest home on a small lot in Tully be sold and the proceeds used to conserve open land in her neighborhood.

Your gift can provide a legacy of land conservation that forever protects the land you care about. If you are interested in considering a conservation legacy of your own, please contact: Mount Grace Major Gifts and Grants Manager David Kotker at 978-541-1767 or kotker@mountgrace.org.



Mount Grace's work to protect Tully Mountain and the surrounding landscape began thanks to a bequest by Eleanor Whitmore.

Grateful Thanks to Supporters of Mount Grace

Every contribution is special to us. Donors contributing to Mount Grace during the fiscal year (June 1, 2019 – May 31, 2020) are listed on these pages. We regret any unintentional omissions. Thank you to each and all.

The Margaret Power Biggs Society recognizes individuals, businesses, organizations, and foundations contributing at least \$1,000 annually to

Margaret Power Biggs Society



Mount Grace Land Conservation Trust. The generosity of Society members gives Mount Grace the resources to conserve the local landscape in a sustained manner that supports

the rural character of the region.

CONSERVATORS

(\$10,000 and above)

Anonymous (4)
Kim Ansin
Bafflin Foundation
Community Foundation of North Central Massachusetts
Community Foundation of Western Massachusetts
Anne Covert
John W. Boynton Fund
Leonard and Marjorie Johnson
Taylor Milsal & Danny Hillis
Diane Nassif
Rose Community Foundation
Gordon and Barbara Russell
David Spackman
Tortuga Foundation
Edward and Linda Vitone

GUARDIANS

(\$5,000–\$9,999)

Anonymous (2)
Eleanor Alden and Tom Manning
Whitney Beals and Pamela Esty
Susan C. Bredesen
Robert A. Clark and Fifi Scoufopoulos
Max and Lynne Feldman
David Foster and Marianne Jorgensen
Mimi Hellen Jones
Bonnie House
Louise Huppert
The Leo S. Walsh Foundation
Moccasin Brook Fund
Gerritt T. Stover

SUSTAINERS

(\$2,500–\$4,999)

Ben and Susie Feldman
Heyes Forest Products Inc.
John Kramer and Elizabeth Lintz
Elizabeth Schodek
Al and Mary Siano
Jerry and Jean Wagener

MARGARET POWER BIGGS SOCIETY

(\$1,000–\$2,499)

Anonymous (4)
Robin F. Ballenger
Theresa N. Beauvais
Polly Bixby and Karen Grzesik
Allen Tupper Brown and Sandy Brown
Bob Busby and Maureen Conte
Michelle and George Caughey
David and Lynn Christianson
Jeffrey Cole
William and Sally Coughlin
Margaret M. Culley and Kathleen Swaim
Anne Cutler-Russo and Tom Russo
Susan and Thomas Patterson
MaryAnn DiPinto
Ruah Donnelly and Steven Dinkelaker
Aaron Ellison
Henry and Aline Euler
Tony Ferragamo and Jean McCurdy
Laurence D. and Ann Fitzmaurice
Nansi and Leonard Glick
Dr. Paul J. and Melinda Godfrey
Pamela and John Hanold
Nancy Hazard
Carol B. Hillman
Judith Hood
Michael Humphries
Mary Eliot Jackson
Carl Kamp and Alyce Mayo
William King
William Lawrence III
Daniel Leahy and Julia Rabin
Bryan Long and Ingrid Schatz
Howard Mathison and L. Mari Rovang
Lisa McLoughlin and Warren Ondras
Paul Montero
Elaine Mroz
Steve and Kathy Rawson
Francis and Suzanne Renna
Rise and John Richardson
Al and Nancy Rose
Peter Samal
Joel and Jean Shaughnessy
D. Fraser and Jean Sinclair
The Skylight Fund
Bruce Spencer and Judith Northrup-Bennett
Marie and David Urquhart
Chris and Tamsin Wallace
John F. and Mary S. Williamson
Henry and Annie Woolsey
John M. and Ann Woolsey III
Paul Yarmoluk & Roberta Gillette
Leigh Youngblood

PROTECTORS

(\$250–\$999)

Anonymous (5)
Debra Bachrach
Nan Barbour and Lisa Bussey
Albert and Bonnie Benjamin
Claire Blatchford
Laurie Boosahda
Martin and Jennifer Bowers
Sally and Ian Bund
Susan Campbell and Todd Fuller
Lucy Candib and Richard Schmitt
Cindy Chadbourne
Brad Compton
Dave Conna
Claude and Marjorie Curtis
Jaana Cutson and Paul Rothenberg
Marshall Dennis
Raymond DiDonato
Emma and Tom Ellsworth
Nancy Evans
Bill and Laurel Facey
William Fellows
Norm Flye
Pauline Forman
Tom and Leslie Freudenheim
Lynne Goodnow
Celt Grant
Wes and Nancy Green
Greenfield Northampton Cooperative Bank
Christian Hains and Sarah Wells
Ramona Hamblin
Carol Harley
John Harrington and Vicky Weber
Howard and Jinx Hastings
Jane Hillman and Siegfried Haug
Gregory and Allison Hoch
Mark Horeanopoulos
Marie Claire and Pierre Humblet
Mary Humphries
Deborah Jackson Weiss
Rob Jalbert and Jerry Marcanio
Eric and Caitlin Johnson
Mary K. King and Shirley Keech
Jack Kittredge and Julie Rawson
David Koester
Steve and Janice Kurkoski
William and Christine Labich
Marguerite LaCroix
Ned LaFortune
Judith Lane and Mark Mattson
Pat Larson
Susan LaScala and Jeff Blomstedt
Johanna and Darlene Lawlor-Moore
Carol and Nelson Lebo
Mary and Craig Leslie
Diane Lincoln
Dean Lisiewicz
Jay Lord and Ruth Charney
Judy McLamb
Al Morgan and Jan Norris
Barret Morgan

Eva Moseley
Eliot and Beth Nottleson
John Olver
Orange Chrysler Dodge Jeep Ram
Orange Oil Company
Whitfield and Linda Painter
Joy Peterson Heyrman and John Heyrman
Ray Purington
Quabbin Harvest
Christopher S. Queen and Alys Terrien-Queen
Philip and Carla Rabinowitz
Curt and Pamela Rand
Bill and Mary Jane Rasku
Daniel Ross
Carol Samuels
Paul Schlaikjer
Eva Schocken
Garth Shaneyfelt and Melinda Baughman
Lynn and Clinton Shaw
Marianne Sundell
Kathryn Sutcliffe
Alex Swan and Debra Gavant Swan
Brian and Suzanne Szyndlar
Joyce and Stephen Thompson
Alan D. Wallace and Barbara Watson
Patricia D. White and James Nickel

STEWARDS

(\$100–\$249)

Anonymous (8)
Ronald Aleman
Donna Allen
Steve Alves
Robert Ambaras
William and Nancy Ames
Athol Savings Bank
Kathleen and Jeff Auer
Sarah Barbour
Diane Barnes and Obadiah Plante
Sam and Marie Bartlett
Beth Bazler
Annette Beauregard
Vahe and Anni Bedian
Judy Berk and Carl Whitaker
Karl and Doris Bittenbender
Camilla Blackman
Maureen Blasco
Sarah Bliss
Christine Borntrager
Cindy and Roger Boucher
John Bowe
Jassy and Tom Bratko
Brookside Equipment Sales
Sue Brown
Jack Cadwell and Karro Frost
Julia and Greg Cardinal
Anne Cervantes
Doug and Linda Chiasson
Lucinda Childs and Eric Vollheim
Genevieve Clark
Jim Clarke

Grateful Thanks

Elizabeth Colburn Mirkovic and Lee Mirkovic
Kathleen Collins and George Northrop
Noreen Conlon
Douglas and Margaret Conner
Bill Corey
Peter Cross and Candace Lee Cross
Patricia Janelle and Steven Cutler
Ralph and Joy Cutter
David Demirjean
Douglas and Julie Denise
James and Jan Dennis
Michael and Tina D'Intinosanto
Brian Donahue and Faith Rand
Steve Douglas
Elizabeth and Christopher Duguay
Pascale and Bruno Duquet
Francena Dwyer and Hiro Itoh
Don and Chris Eaton
Norm and Cheryl Eggert
Gordon and Diane Ellis
Warren Facey
William J. and Susan H. Fitzgerald
Rice B. Flanders
Ernest Fletcher
Fred Flood
Donald Flye
Joyce and Hal Flynn
Melody Foti
Jim French
Margaret Frost
Lester and Nancy Garvin
Russell Gaulin
Kate Marie Gervais
Richard D. Godin
Maida Goodwin
Janice and Peter Greenberg
Greenfield Farmers Cooperative Exchange
Sara Griesemer
Julie and Dave Gross
Gita and David Haddad
Bob Hall
Brian Hall
Davis Chapman Hawkowl
Kim Healy
James and Barbara Herbert
Robert Hudson and Joy Gorzocoski
Rick Innes
Ray Jackson
Evan Jones
Geoff Jones
Matthew Jones and Judith Rosenbaum
Nancy Karsberg
David Kominz and Phyllis Damon Kominz
Dennis and Kate Koonz
Laura and David LaBrack
Luke and Linda LaChance
Robert and Britta LaFortune
Landry & Meilus, LLP, Attorneys at Law
Jane LaPointe
Bob Latour
Phyllis Lawrence and James Slavas
Rose and Jeff Lawrence
LeBlanc Construction
Robin Leger
Rich and Tally Lent
James N. and Jane B. Levitt
Mary Ellen and Jon Lewandowski
Mary Lightner
Polly and Charles Longsworth

David MacLean
Marcy Marchello
Eileen and Paul Mariani
Massachusetts Quarter Horse Association
Mike Mauri
Carol and Robert Mayer
Ruth Mazurka
Sean McNeil
Nancy and Alfred Mollitor
John N. and Laura Moore, III
Anne Morehouse
Charles Morse
Chris and Joann Mossman
Glenn Motzkin
Kim Noyes and Bill Lafley
Sarah and Dennis O'Connell
John O'Keefe and Lynne Stopen
Paul and Karen O'Neil
Anne M. Orlando
Susan Paju and Heidi Kleiner Strickland
Alice Pasterczyk
Gail and John T. Pease
Barry Perkins
Cindy and Tim Petersen
Chris and Meghan Picone
Richard and Anita Pollak
Kim and Russell Pratt
Theresa A. Quinn and George Krasowski
Richard and Suzanne Rader
Jay Rasku and Iris Vicencio-Rasku
Rattlesnake Gutter Trust
Winifred Rivard
Elizabeth A. Roberts
Sam Rodgers
Peter S. and Margaret A. Romano
Rose 32 Bread
Keith Ross and Louise Doud
Robert and Susan Ross
Diane Rouleau-Gardula and Robert Gardula
Raymond and Patricia Saiya
Stephanie Selden
Peter W. Shea
Gwyneth Shopalovich
Norman Sims
Dave and Shelley Small
James Smith
Spectrum Wallco Painting
Cathy Stanton and Fred Holmgren
Zina Steinberg
Jennifer Sussmann
William Swanton
George and Louise Tarleton
The Country Store
Charles Thompson and Sarah Boy
Peter Tomb
Ann Townsend and Richard McCrae
Jenny Tufts and Gary Rucker
Waino Tuominen
Karen J. Unsworth
Dave and Sue Urban
Shirley Wagner
Kathy Wall
Helen and Robert Watts
Doug Wessel and Tom Ziniti
William Whitney
Bruce and Eileen Whyte
Nancy Williams
Gretchin Witman

Frank and Mary Wojciechowski
David Wood and Diana Marston Wood
Joanne and Christopher Woodcock
Albert S. Woodhull and Barbara Francis
Cate Woolner
Allen Young and Dave Malin
Richard and Lillian Young

INDIVIDUALS, FAMILIES AND BUSINESSES

Anonymous (8)
Michael Abbate
Rich Abbott
A. Robert and Joan Abboud
Alan Abel
Mark and Wendolyn Abramson
David and Diane Alexander
Amazon Smile
Walter and Mary Anair
Barbara Anderson
Ellen Anderson
Joseph Ares and Maureen Ruel
Judith Atkins
Ralph Baker
Stephen Balog
Kimberly Bartl
Sheri Bean
Donna Beck
Myron and Kathy Becker
Kathleen Belitsky
Rochelle Bellin
William Bembury and Linda
Downs-Bembury
Mauricio Benavides
Debra Bergeron
Heather Berlin
Alan Berlan and Betsy Alkins
Lisa Berry
Elizabeth Beth
Lisa Bielefield
Russell Bixby
Julia Blyth
Marita Bohman
Jo Ellen Boskind
Marion Boulton
Ed Bourgeois
Barbara Bowen
Beth Brault
Kathleen Brault
Rodney and Jess Brewer
Valeria Bridgewater
Lawrence Brown
Darlene and Ian Bussiere
Katherine Buttolph
Phil Cacioppo and Alice Ward
Rob Cairl
Tiffany Call
Suzanne Carlson
Richard and Suzanne Carpenter
Andrea Carr
Katherine Carr
Deborah and Charles Cary
Mark and Janet Castriotta
Lorraine Cetto
Tom Chalmers and Joan Chalmers-Meyer
John and Nancy Champoux
Claire Chang and John Ward
Erin Chapman
Annie Chappell
Paula Chasan
Joyce Chase
Shirley Chodin
Joanna K. Chon
Jane Clabaugh
Rebecca Clark
Sterling Clark
John and Jeanne Clayton
Marlynn Clayton
Carol Coan
Michel Cocuzza
Eric Cole and Susan Clarke
Jeremy and Stacey Coleman
Tom Conuel
Clifford and Roxanne Cook
Margaret Cooley
Aurora Cooper
H. William and Christine Copeland
Justin Costa and Katie Costa
Kathy Coulson-McCarthy
Molly Craft
Courtney Crossgrove
Len and Judy Crossman
Stephen Crowley and Nancy Hellen
Jenna Cuccinstow
Michael and Jane Cullen
Jessica Cusworth
Jameson Cycz
John Dabrowski and Joan Hazard
Michele DaGama
Paul Daniello
Mike Davieau
Susan Davies
Joanne and Al Deacon
Richard Deane
Lucy deGozzaldi
Michele Despres
Curtis and Laurie Deveneau
Daniel Dibble
Anne Dickie
James and Ann Dillon
Samantha Dokus
Amy Donovan
Justin and Sarah Dorsey
Armand Dube
Larry and Joan Duprey
Cami Duquet
Emma Duquet
Samantha Durfee
Cynthia Durham and Roger Durham
Buddy Dyer
Debora Edson
Linda Radwanski Eiben
Peter Ellis
Samuel Evers
Mary and Michael Fahey
Mary Lou Faust
Chiara Favaloro
Katherine Fazio
Calvin and Fredericka Fellows
Virginia and Oliver Fellows
Nancy Ferron
Robert Fijal
Allan Finnegan
Randy Florence
Karin Forgues
Elizabeth Fountain
Franklin Community Co-operative, Inc.
Lisa Freitag
Dick French and Emily Samuels
Rawn and Cynthia Fulton

Grateful Thanks

Ronald Gagnon and
Mary Williams-Gagnon
Lorraine P. Gauthier
Patricia Gillespie
Michele and Donald Girard
Gary and Patricia Girouard
Peter Girouard
Karen and Keith Glenny
Nancy Goodman
Christine Gosselin
David Graham Wolf and Christina Wolf
Dan and Terry Gray
Dorothy Clare Green
Monica Green
Nancy Greenlaw
Steve and Jennifer Haddad
Amy Hague
Judith Hall and Alistair B. MacMartin
Stephen and Jane Hardy
Fletcher Harrington
Mark Hart
Stan Hartshorn
Reginald and Laura Haughton
Pamela Hayes
Rosie Heidkamp
Amanda and Derek Helie
Sue Hellen
Laura Herbert and Robert Fletcher
Nancy Herbert
Dawn Hickey
Gail Higgins
Robin Hinton
Sharon Hogan
Donna and Robert Houghton
Philip Hubbard
Julie Hulston
Dorcas H. Hurd
Dick Hyland
Cynthia and Raymond Jack
Raynold Jackson
Timothy Jackson
Rev. Philip C. Jacobs
Bryan Johnson and Lynne French
David and Mary Johnson
Julianne and Barry Johnston
John Jones
Gayle and John Kadlik
Deb Kane and Thomas Kane
Peter and Ginny Karparis
Laura Kaye
Terry Kayne
Jonah Keane
Chris and Joan Keating
Lynne and Thomas Kellner
Laurel and Dennis Killian
Manuel and Mary King
Michael and Laura Knight Kirkpatrick
Michael and Mary Kociela
Emily Koester
Zane Q. Kotker
Hank Kozlowski
Joyce Kulig and John Fletcher
Representative Stephen and
Suzanne Kulik
Audrey LaBrie
Susan Lagace
Larry Lagasse
Steven and Kristin Landry
Sita Lang and Anne Jemas
Adrienne LaPierre
Richard LeBlanc
Sandra & Douglas LeBlanc
John Lepore

Richard and Scarlett Livesay
James and Cyndy Long
Hannah Lord
Judith Lorei
Janice Loux
Eleah Lubtakin
Rick and Dale Lucier
Ron and Lori Lunn
James MacPhee
Robin Maestro
Joe Mahan
Kathleen Mahoney
Brenda Malloy
Kim Matecki
Hank and Mary McCarthy
Anita and Charles McDowell
Gregory and Judy McGuane
Trish McGurk
Robin and Terry McKeon
William McKerchie
Rachel Mcnaughtan
James and Maureen Meausky
Nancy and James Melbourne
Erik Meszanski
Gerry Michaud
David Mitchell
Catharine and George Mizhir
Amy Modzeleski
Sherrill Modzeleski
Dale Monette
Dan Monette and Karol Zub
Emily Monosson and Ben Letcher
Joanne Moreau
Martha Morgan
Gordon Morrison
Angela Murphy
Francis & Marilyn Murphy
Lynn Murray
Michael Naughton
Jean Nelson Peterson
KimLynn Nguyen
Michael and Natalie Noble
John Nobrega
Deb and Joe Nunes
John and Louis Nylander
Eddie Oakley
Helen O'Hara
Raymond Olander
Linda Overing and John Ryan
Kathy Panagiotes
George Panos
Carol Papa
Jennifer Paris
Lloyd and Dorothy Parrill
Frances Pearson
Lisa Pepin
Patrick and Holly Perry
Jamie Pfisterer
Veronica Phaneuf
Nanette Pierce
Richard Piermarini
Joan Pillsbury
Arthur and Lynne Pinsoneault
Susan and Stanley Piro
Lynne Pitts
Rosalind Pollan
Jean Popik
Jamie Pottern and Bethany Webster
Stephen Prajzner and Jill Cashman
Will and Shalee Pratt
Quabbin Sky Vineyard
Kimberly Quinlan
Elliott R. Quint and Janice M. Hayden

Joseph and Sally Quinton
Caroline Raisler
Liza Ramlow
Richard and Patricia Ray
Peter and Fae Remelius
Michelle Remillard
Paul Rezendes and Paulette Roy
Karen and Dennis Rich
Tom and Joanne Rich
Sam and Barbara Richardson
Richard F.J. Roark
Dee Robbins
Ian Robichaud
Belen Rodriguez
Michael Romanow
David and Nancy Romanowski
Johanna Rosen
David Ross
Andy and Cynthia Rothschild
Leo Rousseau
Crystal Roux
Joseph and Taffy Ruggeri
Dr. Robert and Claire Sagor
Whit Sanford and Tom Miner
William Santini
Karen and Douglas Sargent
Sara Schley and Joe Laur
Leslie and Arnie Schmidt
Laurian Schulte
Kathryn Service
Paula Setterlund-Blair
Cathy Sevigny
Shelley Seymour
Karen Shapiro Miller
Philip and Andrea Shaughnessy
Karen Shiebler
Greta Shores
Caroly Shumway
Donald Simms and Magda Ponce-Castro
Prudence Smith and Sharon Gensler
Roger and Marsha Smith
Julie and Chad Snyder
Karen Spaulding
Bobbie and David Spiegelman
Patti Stanko
Mary Jo Stanley
Sam Stein and Josh Cyganiewicz
Eric Stocker and Barbara Reily
Don and Jane Stone
Janice Stone
Devin Straley
Mary Strebig
Jennifer Sullivan
Mandy Susman
Frank Talarico
Ellen Tannehill
Olivia and Charles Tarleton
Lloyd A. Taylor and Glen A. Taylor
Arlene L. Tenney
Terra Nova Composting, LLC
Lori Thayer
The People's Pint
Peggy Therrien
Samantha Therrien
Donna Thibault
John and Rita Thompson
Sarah Underwood
Tim Van Egmond
Cheryl Volpe and Dan Volpe, Jr.
Beverly von Kries
Elizabeth Walker
Joan Walker
Leah Wallner

Paul Wanta and Heather Lenz
Alice Ward and Phil Cacioppo
Gary and Liz Warder
Wendy Warner
Joan Wattman
David Webber
Nicole Weber
Thomas and Mary Weber
Gail and Gary Weiss
Bart Wendell
Carrie West
Eric and Linda White
Tessa White-Diemand
Laney Widener
Robert Wigmore
Elaine Williams
Erin Williams
Nancy Wilson
Winchendon Garden Club
Norm Wironen
Mary Wolfe
Pat Worth and Michael Young
Elinor S. Wright
Laura Wright
Mark Wright
Michael and Greg Wright
Seth and Allison Wright
Amy Young
Mike and Karen Young
Tia Yurko
Joyce Zeiner & William Burke

VOLUNTEERS

Volunteers and In-Kind Contributions between June 2019 – May 2020

Nancy and Bill Ames
Bebe Ames
Micha Archer
Frances Arnold
Beth Arseneau
David Babik
Oak and Ivy Band
Kurt Benson and Lynn Taylor
Jeff Blanchard
Julia Blyth
Laurie Boosahda
Cindy and Roger Boucher
Martin Bowers
Jassy Bratko
Gary Brigham
Andy & Karen Brooks
Julianne Busa
Jack Cadwell
Ted Cady
Kelsey Cass
Dave and Lynn Christianson
Russ Cohen
Len Crossman
Star Cummings
Bobby Curley
Ann Cutler-Russo
Marshall and Sandy Dennis
Lorraine DeSouza
Mike Downey
Christine Duerring
Pascale Duquet
Cynthia Durham
Norm Eggert
Charley Eiseman
Ellsworth Contracting
Tom Ellsworth
Emma Ellsworth

Grateful Thanks

Derek Estler
 Dan Ewald
 Laurel and Bill Facey
 Lula Field
 Lincoln Fish
 Don Flye
 Norm Flye
 Sarah Fortune
 Friends of Alderbrook Meadows
 Karro Frost
 Rick Gardner
 June Girouard
 Celt Grant
 Joe Graveline and Nina Gross
 Clare Green
 Mackenize Greer
 Sandra Grund
 Kris Gunderman
 Kurt Habel
 John Hagar
 Christian Hains
 Brian Hall
 Ramona Hamblin
 Isabelle Hanley
 Lisa Hayden
 Dr. John Harrington
 Mimi Hellen Jones

Hitchcock Brewing Company
 Rich Holschuh
 Michael Humphries
 Raynold Jackson
 Dan Jaffe Wilder
 Rob Jalbert
 Katherine Johnson
 Jeff Johnstone
 Audrey LaBrie
 Luke and Linda LaChance
 Will Lane
 Pat Larson
 Darlene Lawlor-Moore
 Johanna Lawlor-Moore
 Dan Leahy
 Bryan Long
 Rebecca Longvall
 Sally Loomis
 Jami MacCartney
 Macmannis Florist and Greenhouses
 Mama Maple Beverage
 Gerald Marcanio
 Eileen Mariani
 Erik Mas
 Mike Mauri
 James McCarthy
 Jean McCurdy

Joanne McGee
 David McKinley and Crew
 Lis McLoughlin
 Lillian Minihane
 Dan Monette
 Dale Monette
 Elaine Mroz
 Murdock Dairy Bar
 Diane Nassif
 George Northrop
 North Quabbin Trails Association
 Dick O'Brien
 Christine O'Donnell
 John O'Keefe
 Alex Olson and Family
 George Perides
 Eric Peterson
 Will and Shalee Pratt
 Jay and Ivy Rasku
 Kathy and Steve Rawson
 David Ray
 Red Apple Farm
 Sam and Barbara Richardson
 Steve Roberto
 Gay Roberts
 Allen Ross
 Keith Ross

Tom Russo
 Priscilla Ryder
 Erika Schaper
 Carolyn & Fred Sellars
 Kyle Simmington
 David Singer
 David Small
 Andrew Smith
 Jim Solinas
 Sunset View Farm
 Steve Svoboda
 Sweet Lucy's Bakery
 Natalie Talbot
 Keang Tedstone
 Templeton Kitchen Garden
 Martha Tenny
 Lee Thomas
 Cassie Tragert
 Marie Urquhart
 Jerry Wagener
 Linda Wells
 Anna Wilkins
 Wingate Farm
 Pat Worth
 Corey Wrinn
 Michael Young
 Betsy

FRONT COVER PHOTO CREDIT:
 Anne Colturi

Because a picture is worth a 1000 words...



Leigh Youngblood with MA Senator Anne Gobi and other partner representatives celebrating the creation of the new 465-acre Norcross Hill Wildlife Management Area in Templeton!



The Quabbin Harvest Flip the Switch party celebrated the installation of solar panels on the roof of Mount Grace's downtown Orange building. The panels will provide 17,000 kWh of power this year for the co-op.



Participants taking photos of Canid tracks found during the 2020 winter tracking workshop at Skyfields Arboretum led by expert local tracker Paul Wanta.



Executive Director Emma Ellsworth puts in the finishing touches on the opening day of the new Sunset View Farm walking trail in Winchendon.



Leigh Youngblood and Michael Humphries drawing in a crowd for free ice cream at the Sunset View Farm open farm day.



MOUNT GRACE ANNUAL REPORT 2020

Preliminary Financial Summary

Year Ending May 31, 2020

REVENUES	FY2020 PRELIMINARY	FY2019
Gifts & Memberships	\$ 483,825	\$ 812,284
Grants	\$ 253,793	\$ 504,266
Program Service Fees	\$ 810	\$ 101,658
Investment Income	\$ 20,337	\$ 6,103
Businesses & Community Orgs	\$ 19,446	\$ 29,474
In-kind	\$ 2,334	\$ 13,766
Other	\$ 6,486	\$ 2,700
TOTAL REVENUES	\$ 787,031	\$1,470,251

EXPENSES	FY2020 PRELIMINARY	FY2019
Landscape Conservation	\$ 178,392	\$ 86,641
Farm Conservation	\$ 96,674	\$ 81,994
Community Conservation	\$ 74,487	\$ 61,203
Land Stewardship	\$ 86,437	\$ 129,561
Engagement & Education	\$ 82,603	\$ 218,866
TerraCorps	\$ 0	\$ 474,999
Administration	\$ 126,917	\$ 225,694
In-kind	\$ 2,334	\$ 13,766
Fundraising	\$ 94,208	\$ 128,860
TOTAL EXPENSES	\$ 742,052	\$1,421,584
Surplus/Deficit	\$ 44,979	\$ 48,667

STATEMENT OF FINANCIAL POSITION	FY2020 PRELIMINARY
Total Current Assets	\$ 1,283,584
Conservation Land & Restrictions	\$ 1,451,078
Buildings & Equipment	\$ 332,782
TOTAL ASSETS	\$ 3,067,444
Total Current & Long-Term Liabilities	\$ 272,331
Total Net Assets & Retained Earnings	\$ 2,795,864
TOTAL LIABILITIES & EQUITY	\$ 3,067,444



In fiscal year 2018 Mount Grace initiated the spin-off of our successful TerraCorps program. During the early months of fiscal year 2019 TerraCorps

continued to be funded as a program of Mount Grace until becoming completely autonomous. Decreases in expense and revenue from FY19 to FY20 reflect in part the establishment of TerraCorps an independent nonprofit. Mount Grace congratulates TerraCorps on its transition to full independence!

Protected since 1986: 34,942 Acres

Mount Grace Land Conservation Trust

Our Mission: To benefit the environment, the economy, and future generations by protecting significant land and encouraging land stewardship.

We welcome your articles, photographs, comments, and suggestions. For information about becoming a member or to request a change of address, please contact our office at:

Mount Grace Land Conservation Trust

1461 Old Keene Road
Athol, MA 01331
978-248-2043 (tel)
978-248-2053 (fax)
landtrust@mountgrace.org
Visit our web site at
mountgrace.org



Follow us on Facebook, Instagram, and Twitter @MountGraceLCT



Mount Grace Staff

Emma Ellsworth, *Executive Director*
Leigh Youngblood, *Senior Advisor*
Sarah Wells, *Conservation Director*
Rocio Lalanda, *Farm Conservation Program Manager*
Fletcher Harrington, *Land Conservation Specialist*
Liz Wilson, *Finance and Administration Manager*
James Holcomb, *Membership and Administration Coordinator*
Sharon Hogan, *Financial Consultant*
David Kotker, *Major Gifts and Grants Manager*
Marielena Lima, *Communications and Engagement Coordinator*
KimLynn Nguyen, *Stewardship Manager*

Mount Grace Board of Directors

Max Feldman Petersham
President
Mimi Hellen Jones Petersham
Vice President Washington DC
Lenny Johnson Carlisle
Treasurer
Joanne McGee Northfield
Clerk
Larry Fitzmaurice Wellesley / Warwick
Bryan Long Orange
Lis McLoughlin Northfield
Steve Rawson Winchendon
Al Rose Phillipston
Joel Shaughnessy Athol
Al Siano Greenfield
David Spackman Royalston
Phil Stevens Barre